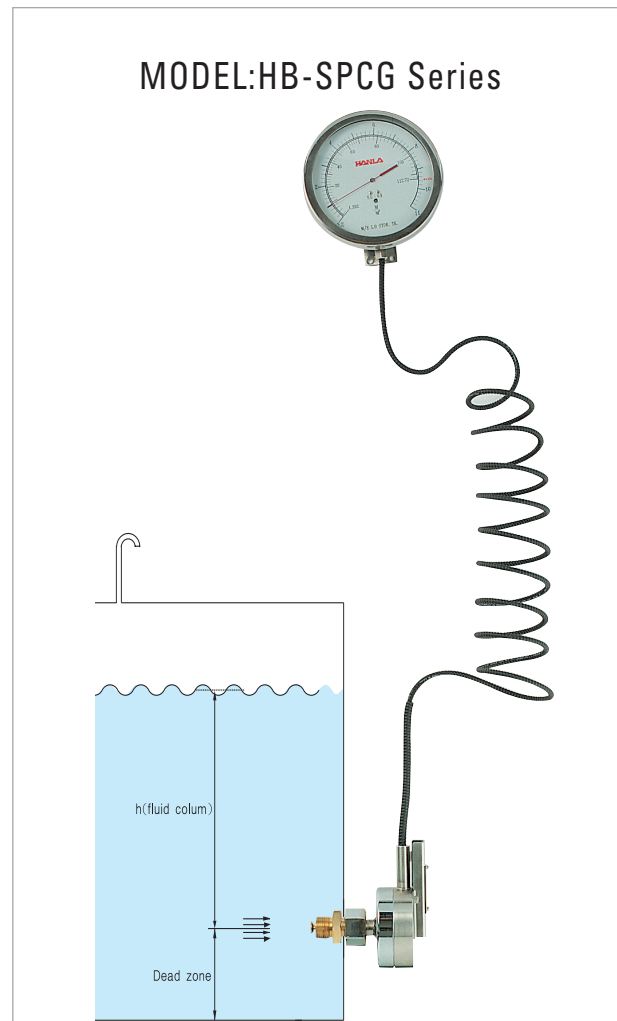


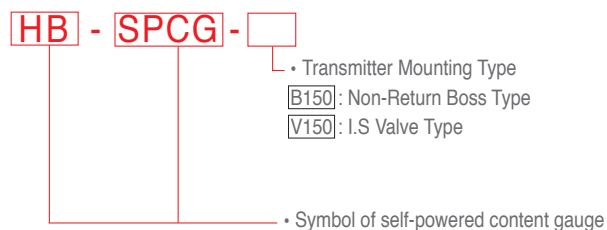
# Level Gauges

## Self-Powered Content Gauge

MODEL:HB-SPCG Series



### Model number code system



### OPERATING PRINCIPLE

Self-powered content gauge unit consists of transmitter chamber, capillary tube and indication gauge. The weight of the fluid column in the tank will be transformed into gas pressure in the transmitter chamber. The gas pressure is transferred to the indicating gauge through the capillary tube. That means, the weight of the fluid column in the tank is directly proportional to the indication. In case of over or under-pressure in the tank, it is impossible to compensate the value of gauging.

### FEATURES

- No floats.
- Completely automatic.
- Local indication.
- No requires external power.

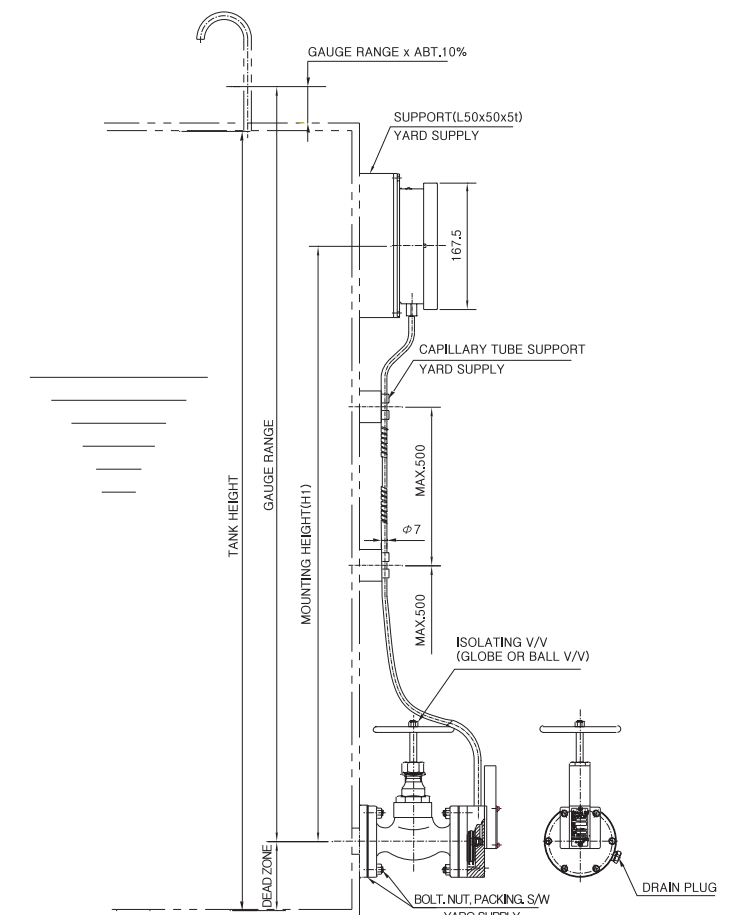
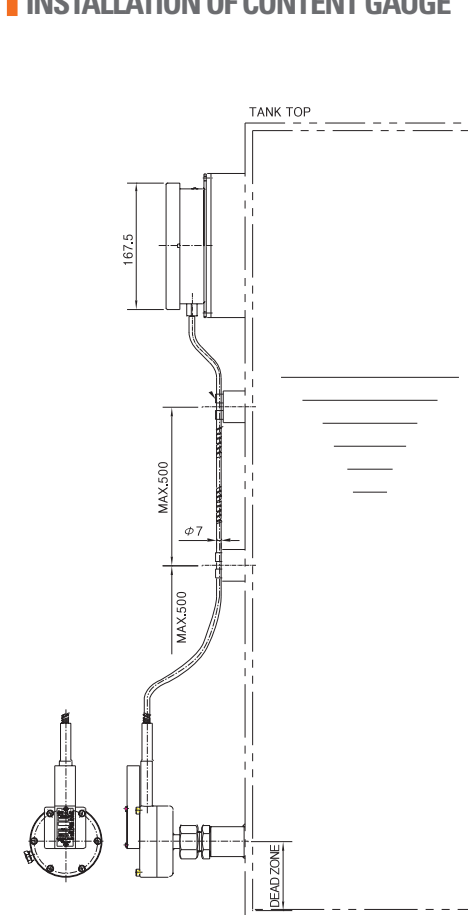
### APPLICATION

Self-powered content gauge is widely used for Diesel oil, Lub. oil, Heavy fuel oil, Solvents gas oil, Fresh water, and all no corrosive liquid.

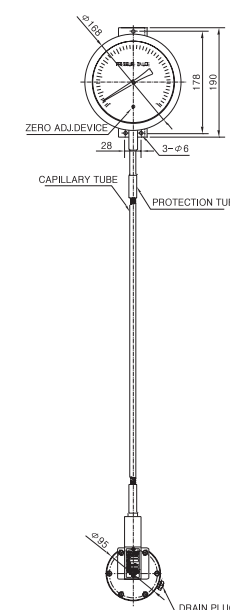
### SPECIFICATIONS

- Range(Tank depths):From 1 to 12 meters
- Over load : 100% above maximum range
- Operating temperature
  - Indication gauge : -40 to +70 °C
  - Transmitter chamber : -40 to +120 °C
- Indication gauge
  - Mounting : Wall mounting
  - Diameters :  $\phi$  150mm
  - Gauge body mat' l : SUS 304
  - Graduation : Height or Volume/Dual scale available
- Capillary tube
  - Material : SUS 304
  - Available other length on request

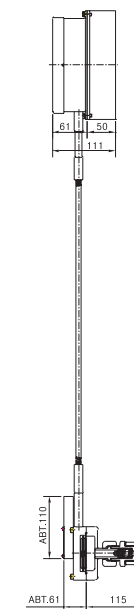
### INSTALLATION OF CONTENT GAUGE



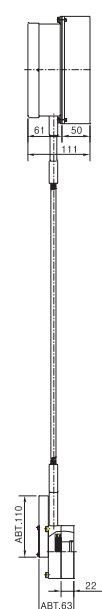
### OUTLINE / DIMENSIONS



HB-SPCG-B150



HB-SPCG-V150



### Standard model and specification

Model	Application	Connection Size		Accuracy	Capillary tube Length	Material		
		Low viscosity	high viscosity			Indication Gauge	Capillary Tube	Diaphragm
HB-SPCG-B150	General Liquid	PF3/4"	N/A	±1.0% of Full Range	STD. 3M/MAX.16M	SUS304	SUS304	SUS316
HB-SPCG-V150	General Liquid	5K, 10K25A	5K, 10K25A	±1.0% of Full Range	STD. 3M/MAX.16M	SUS304	SUS304	SUS316

Please consult with factory when other condition are required