



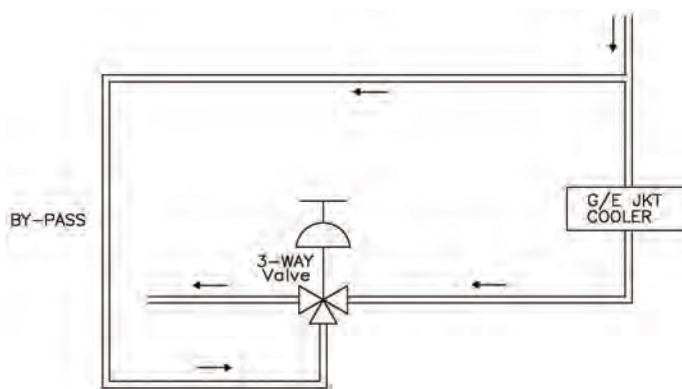
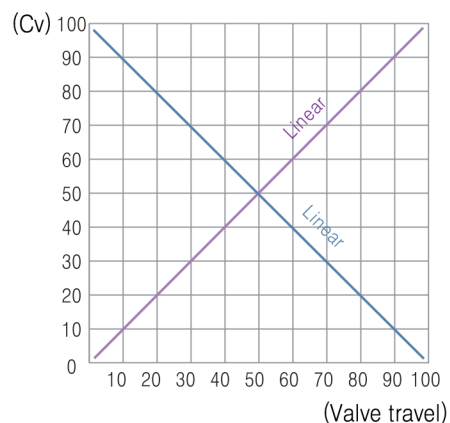
Control Valve TG Series



► TG FEATURES

TG-Series 3-Way Globe Type Control Valve can be used to control the circulation of water, oil, sea water or other liquids in heating or cooling application.

- Cage trim provides easy maintenance.
All trim parts can be removed from the top of the valve.
- Cage-guided trim for increased valve stability and trim life.
- Spring located teflon stem packing eliminates the need for periodic adjustment.
- Lower maintenance cost through less down-time.
- No need to remove valve from line to replace trim.
- Lower stem friction for increased stability.



TG GENERAL SPECIFICATION

Valve Body Type & Style	3-Way Globe Type
Pressure Rating	ANSI 125~2500 or JIS 5~63K
Valve Size	1"~16" (25~400mm)
Temperature Range	PTFE V-ring : -20~460°F (-29~238°C) Laminated Graphite : -320~800°F (-195~427°C)
Body Material	ASTM A126 CL.B (FC200) ASTM A216 WCB (SCPH2) ASTM A536 65-45-12 (FCD450) ASTM B584 C905 or C836 (BC3 or BC6)
Flow Coefficient (Rated CV)	9 to 1890
Flow Characteristics	Linear
Leakage Class	ANSI III, IV, V, VI
Rangeability	30:1~50:1
Spring Range	3~15 psi (0.2~1.0 kg/cm ²) / 6~30 psi (0.4~2.0 kg/cm ²)