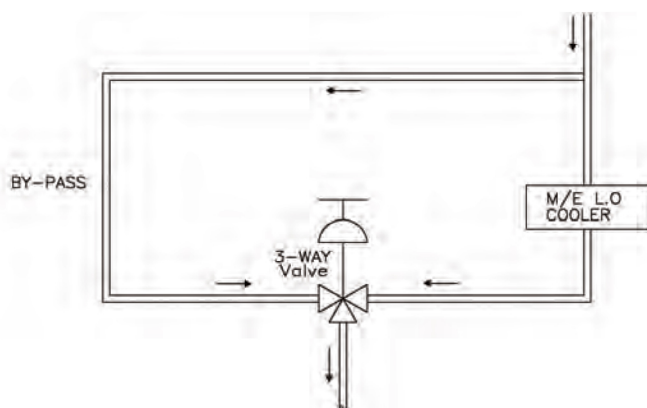
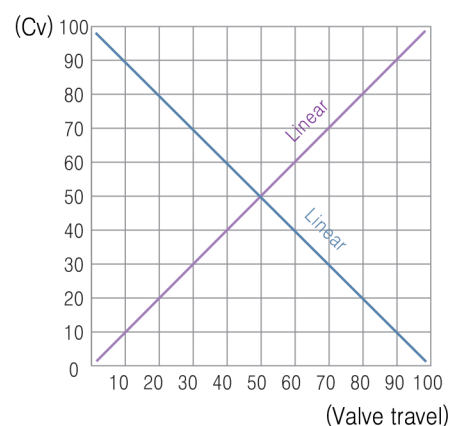




# Control Valve TR Series

## ► TR FEATURES

- Smoother throttling with greater accuracy
- Both converging and diverging flow configurations are available.
- The rotary plug is designed to prevent from being stuck by fine particulates or fouling material in the fluid.
- Air Failure Position can be easily reversed by re-installing the arm upside-down without taking out the valve body from the line.
- Handwheel and positioner are provided as an option.  
Any other accessories such as air filter regulators, I/P transducers, pressure / temperature transmitters, solenoid valves, limit switches can be provided if required.
- The actuator normally installed perpendicular to the valve stem could be installed at any horizontal angle (360 degrees) in accordance with the site conditions where the valve is located.



## TR GENERAL SPECIFICATION

Valve Body Type & Style	3-Way Rotary Type
Pressure Rating	ANSI 125~150 or JIS 5~10K
Valve Size	4"~24" (100~600mm)
Temperature Range	32~212°F (0~100°C)
Body & Bonnet Material	ASTM A126 CL.B (FC200) ASTM A216 WCB (SCPH2) ASTM A536 65-45-12 (FCD450)
Flow Coefficient ( Rated CV)	145~5500
Flow Characteristics	Linear
Leakage Class	1.8% of the rated Cv
Rangeability	30:1
Spring Range	3~15 psi (0.2~1.0 kg/cm <sup>2</sup> ) / 6~30 psi (0.4~2.0 kg/cm <sup>2</sup> )