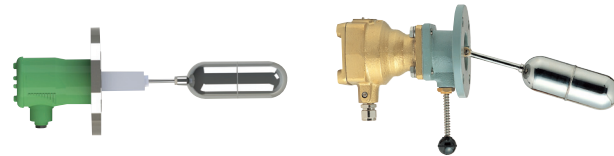


# Level Switches

## Micro Switch Type Float Switch

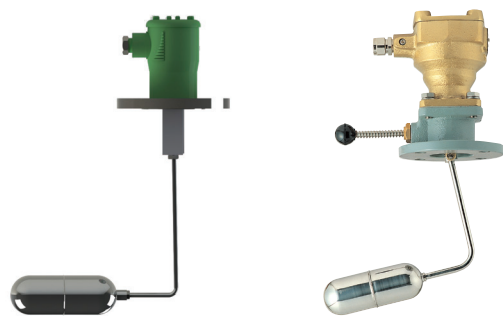
### HORIZONTAL TYPE : FMS-H SERIES



STANDARD TYPE

EXPLOSION PROOF TYPE

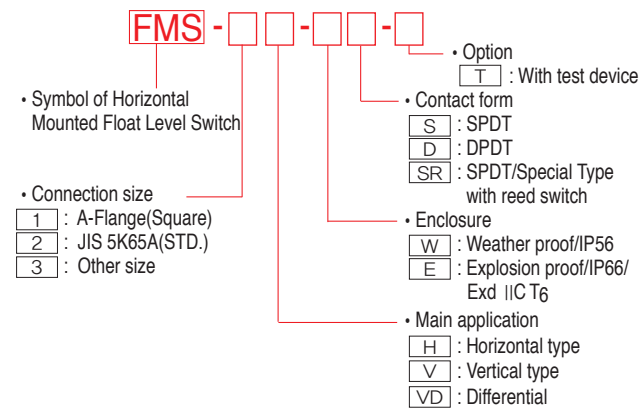
### VERTICAL TYPE : FMS-V SERIES



STANDARD TYPE

EXPLOSION PROOF TYPE

#### Model number code system



### OPERATING PRINCIPLE

Magnetic float type level switches detect the liquid level and send out contact signals of micro switch by ON-OFF action. A magnetic action between two magnet fully separated by each partition wall is utilized. One is built in another end of the float and the other is attached on the switch unit in the housing.

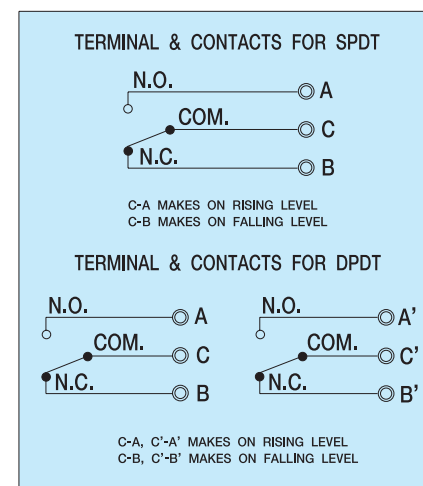
### FEATURES

- Fully sealed
- The switch unit is completely separated from the parts inserted within the tank by non-magnetic diaphragm
- Reliable
- Designed compact, it has a large contact rating of 250VAC, 5Amp. and is subject to no troubles.
- Easy maintenance
- Simply designed switch unit for easy maintenance.
- Durable float
- Argon Gas welded stainless steel floats are durable for pressure and temperature.

### APPLICATION

Magnetic float type level switches are widely used for Heavy fuel oil tanks, Settling tanks, Sludge tanks, Sewage tanks, Fresh water tanks, Lub. oil tanks, D.O tanks and others.

### CONTACT FORM



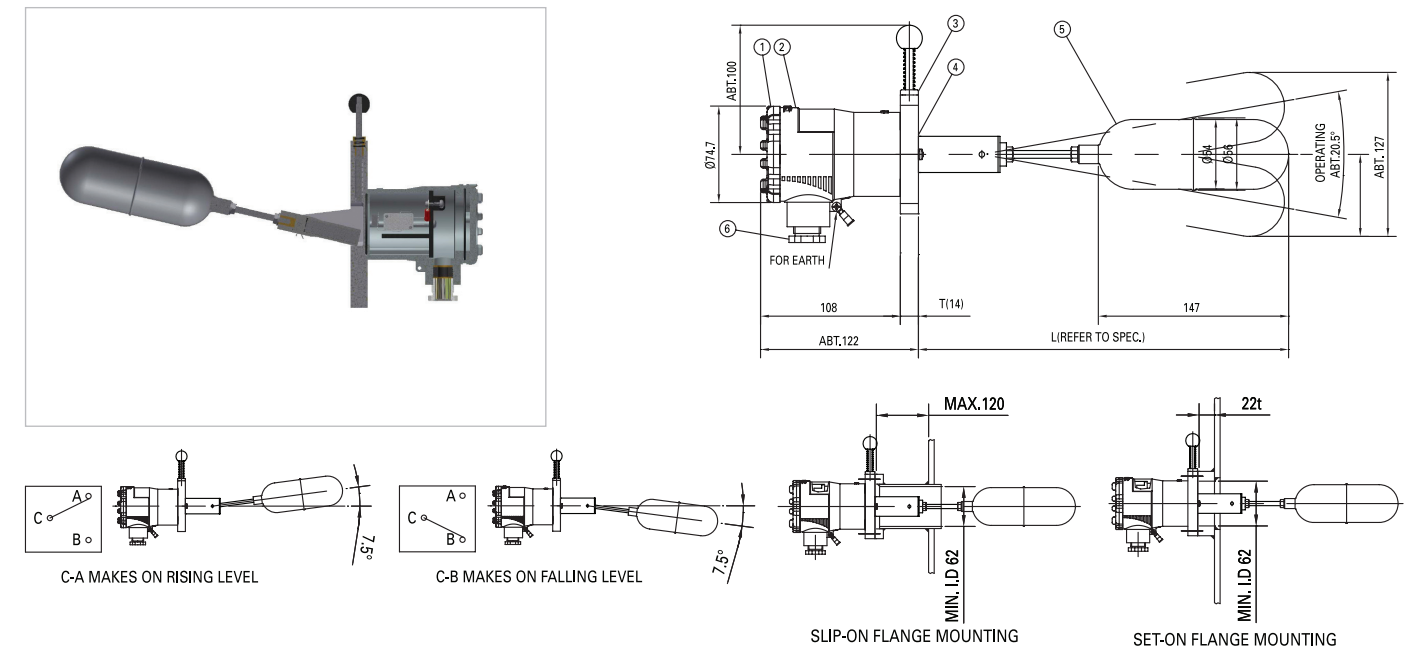
### Standard model and specification

Type	Application	Max. pressure (kg/cm <sup>2</sup> )	Max. temperature (°C)	Switch contact rating	Min. Sp.Gr	Cable entry	Material		
							Float	Flange	Switch body
Standard Type	General liquid	10	180	250VAC,5A	0.78	15b (PF1/2")	SUS304	ADC	ADC
Differential Type	Widely Differential	10	180	250VAC,5A	0.8	15b (PF1/2")	SUS304	ADC	ADC
Explosion Proof Type	Hazardous area	10	180	250VAC,5A	0.78	NPT1/2"	SUS304	SUS304	SCS13

#### Optional informations

1. Material(SUS304, SUS316)for wet parts including float and flange is also available on request.
2. Cable entry of 3/4"(JIS F 20 a, b, or c)is also available on request.
3. Flanges of larger nominal diameter than the standard ones are also available on request.
4. Non-explosion proof models can be used as intrinsically safe type joined with I.S barrier.

### OUTLINE / DIMENSIONS (HORIZONTAL TYPE : FMS-H SERIES)



### OUTLINE / DIMENSIONS (VERTICAL TYPE : FMS-V SERIES)

