

Standard Features

- Rescue Manager enables all calls and events from networked Command Panels to be monitored and acknowledged on a central display
- Supervises all networked devices
- Logs call and event activity for reporting
- Enables pre-recorded messages to be played
- Allows email messages to be automatically distributed based on call activity
- Intuitive color user interface
- Real time operations

Description

Detect³⁶⁰ Emergency Communication System Rescue Manager software enables a PC workstation to monitor and acknowledge emergency calls from up to thirty-one networked ECS Command Panels. Calls and events may be color coded for display on the Rescue Manager active events screen with up to six priority levels.

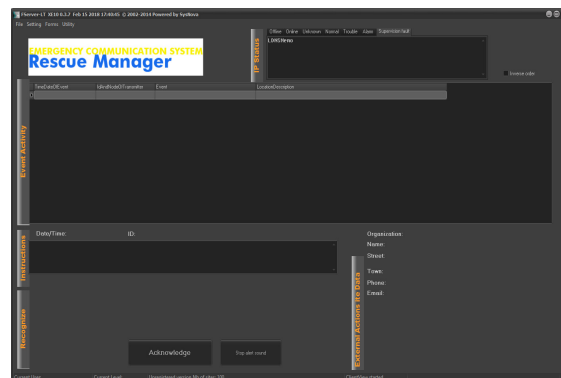
Each ECS Command Panel can be monitored by up to two Rescue Manager PC workstations. The Rescue Manager PCs can be configured so that *both* can acknowledge/answer calls or only *one* PC can acknowledge calls, the second unit being configured in view-only mode.

Rescue Manager supervises ECS Command Panels for trouble events such as battery failure, remote call station connection failure, or AC power failure. Should a trouble event occur, a diagnostic warning is displayed on the event activity screen.

Rescue Manager will log all calls and events that occur on an Emergency Communications System network, including the start and end time of individual calls. These call and event logs can be printed for reporting purposes.

Email messages can be distributed from the Rescue Manager to a single email address, or multiple email group recipients, alerting of a call or event. Rescue Manager can also transmit pre-recorded messages to Emergency Communications System stations.

For installation guidance, please refer to 579-1261 *TrueCom AOR Rescue Manager Software*.



TCOM-NC2200 Rescue Manager

Product Selection

Model	Description
TCOM-NC2200	Rescue Manager PC Software

System Requirements

Rescue Manager PC Operating System Requirements

Microsoft Windows 7 or Windows 10 (32 and 64-bit)

Rescue Manager PC Hardware Requirements

Minimum CPU Requirements	Intel CPU with 1.0 GHz processor
RAM	Minimum 1GB available RAM
Drive	Minimum 1 GB open drive space.
Audio Support	Integral or external speaker and microphone required.
Ethernet Port	1 x LAN RJ45 port; static IP address

