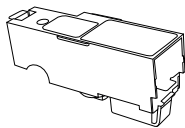
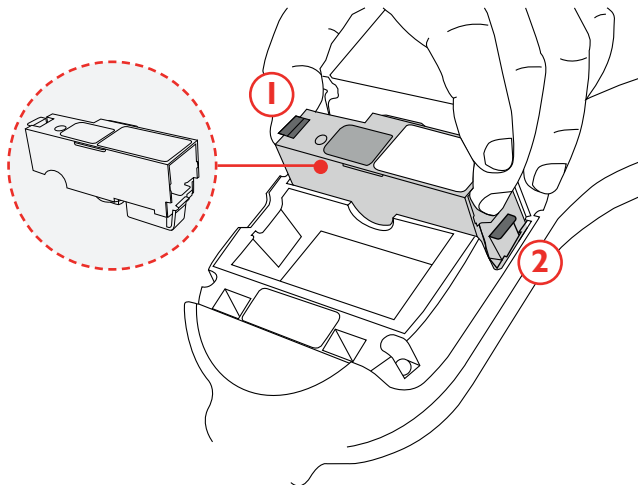


Generator Removal & Replacement



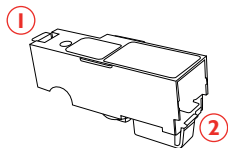
Note:

When replacing the generator, ensure that the unit is switched off before opening the back cover.



Generator

Removal & Replacement



Removal

- Remove the smoke cartridge from within the generator.
- Disengage clip **1** and lift. Repeat for clip **2** to remove the used generator.
- When replacing a generator, any dust or debris from the main unit can be removed with an air duster. Any condensation can be removed by wiping with a lint-free cloth.

Replacement

- Insert the generator firmly into the recess, engaging clips **1** and **2**.
- Once the generator is inserted do not remove it until it is indicated that a replacement is necessary.